



EDS + Resorts World:
BETTER
TOGETHER
ORIENTATION WEBINAR
FRIDAY, MARCH 15 • 11AM EST



Welcome to Resorts World!

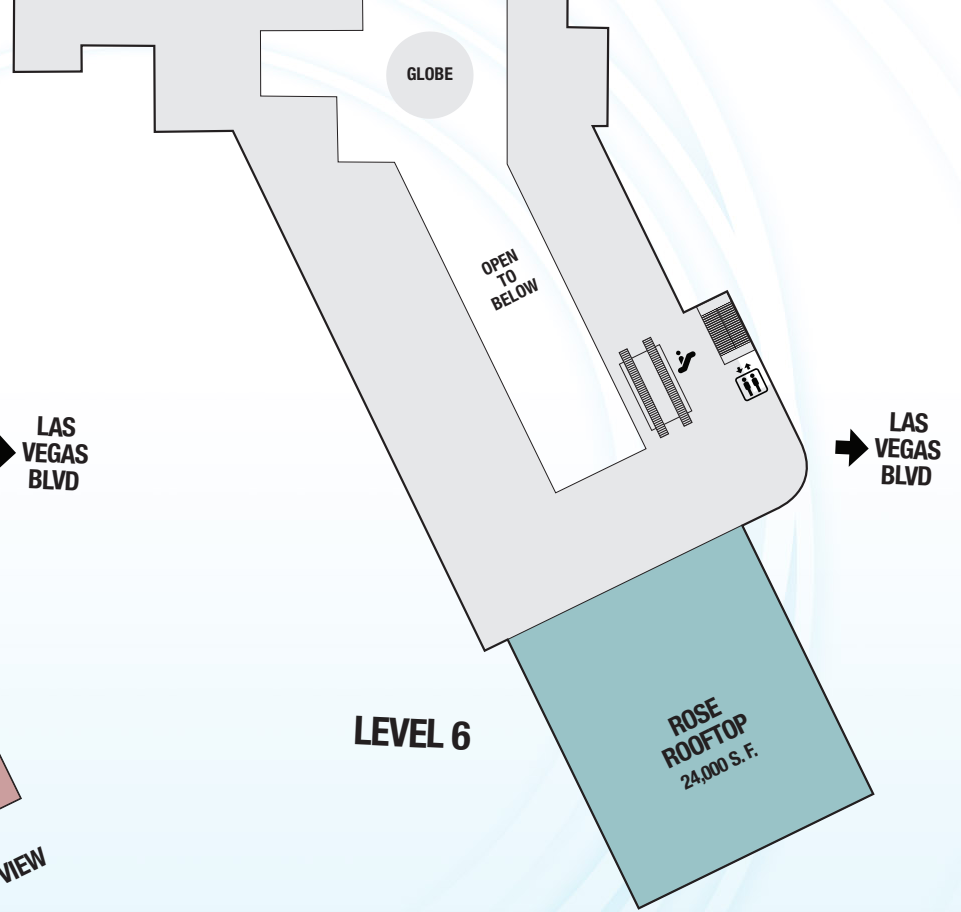
Resorts World Floor Plans



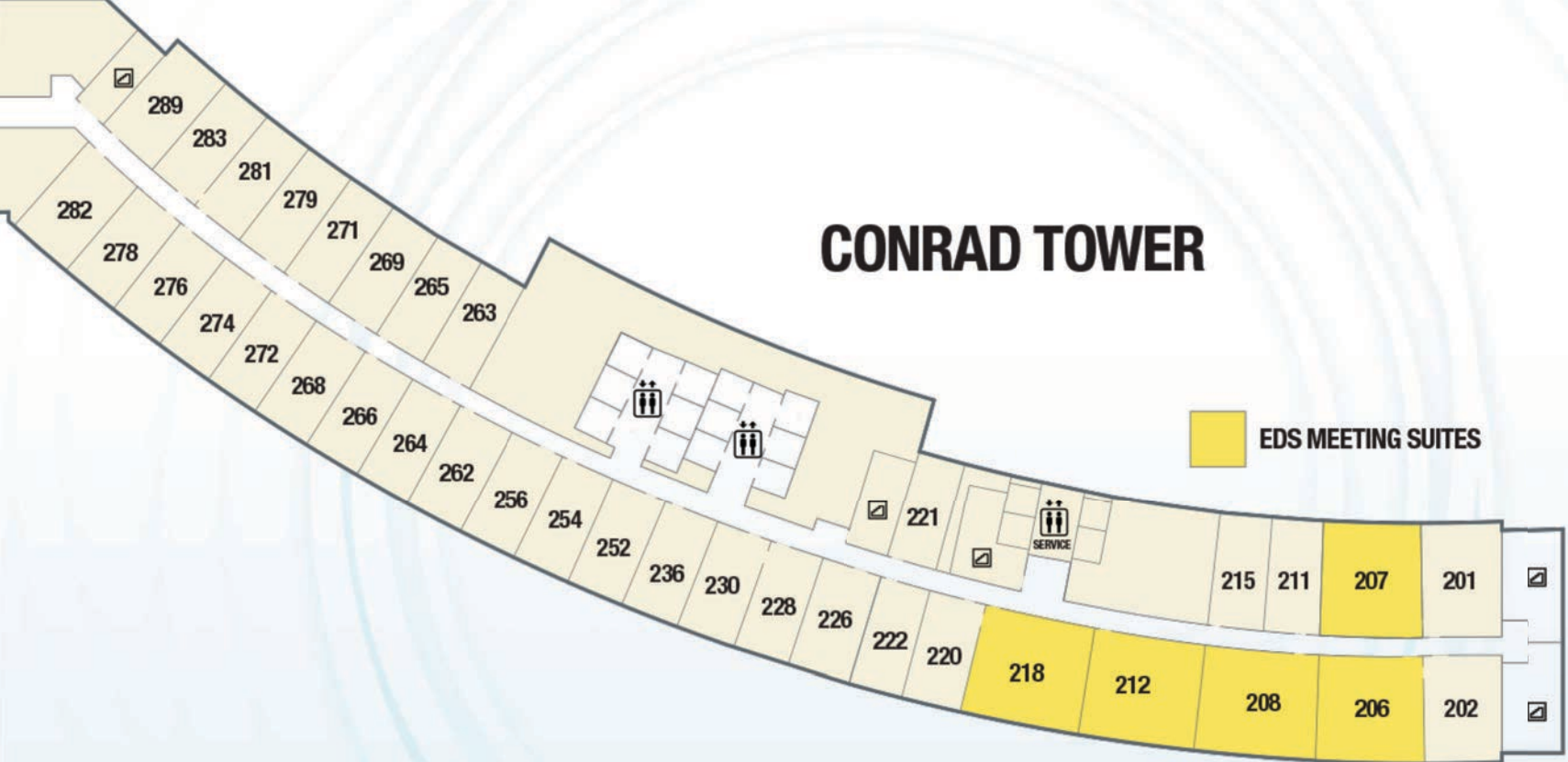
→ LAS VEGAS BLVD







CONRAD TOWER



 EDS MEETING SUITES

Retail

With approximately 70,000 square feet and two levels of dedicated retail space, Resorts World offers a wide variety of exciting retail brands and shopping experiences.

- **RW Stores**
 - Snacks, refreshments, wine, spirits and apparel in the Hilton and Conrad Lobby
- **Black Clover**
 - Lifestyle apparel
- **O Bag**
 - Customizable handbags
- **Reset IV**
 - IV Hydration packages
- **Maceoo Cutz**
 - Mens tailored clothing
- **Fred Segal**
 - Speciality lifestyle retail



See the full list at: edssummit.com/eds/resorts-world-info

Dining

Casual Eateries (\$\$)

- Bites
- Junior's
- Agave Bar & Grill
- Sun's Out
Buns Out
- Richie Palmer's

Bars & Lounges (\$\$-\$\$\$)

- Dawg House
- Crystal Bar
- Baccarat Bar
- Eight Lounge
- Gatsby's
- Jalisco Underground
- RedTail

Fine Dining (\$\$\$-\$\$\$\$)

- Brezza
- Carversteak
- Kusa Nori
- FUHU
- Crossroads Kitchen
- Stubborn Seed
- Genting Palace



See the full list at: edssummit.com/eds/resorts-world-info

Sponsorship Opportunities



See what we have to offer at: edssummit.com/sponsorship



EDS 2024

Preliminary Schedule

- **Sunday (5/19)**

- Exhibitor set-up

- **Monday (5/20)**

- Exhibitor set-up until 3:00pm
- 10:00am
Registration Desk opens
Badge pickup
- 3:00pm - 8:00pm
Connections Café opens,
Arrival Lounge
- All day meetings
- Evening - Company
receptions and events,
invitation only

- **Tuesday (5/21)**

- 7:00am - 5:00pm
Registration Desk open
Badge pickup
- 10:00am - 7:00pm
Connections Café open
- 4:00pm - 5:30pm
All Industry Reception
- All day meetings
- Evening - Company
receptions and events,
invitation only

Preliminary Schedule

- **Wednesday (5/22)**

- 7:00am - 5:00pm
Registration Desk open
- 7:00am - 7:00pm
Connections Café open
- All day meetings
- Evening - Company
receptions and events,
invitation only

- **Thursday (5/23)**

- 7:00am - 5:00pm
Registration Desk open
- 7:00am - 7:00pm
Connections Café open
- All day meetings
- Evening - Company
receptions and events,
invitation only

- **Friday (5/24)**

- 8:00am - 11:00am
Registration Desk open
- 7:00am - 12:00pm
Connections Café open
- Half day meetings

Meeting Rooms, Suites & Ballrooms

Conrad Suites



Hilton Rooms



Executive Meeting Rooms



Learn more at: edssummit.com/eds/executive-meeting-rooms

Ballrooms



Rose Ballroom virtual tour: <https://tours.altoura.com/rwlvrose>

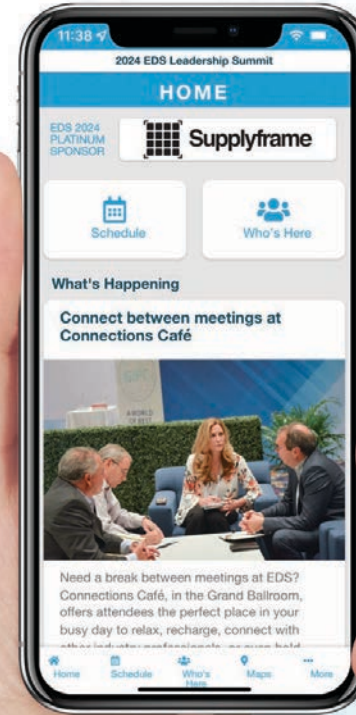
Lily Ballroom virtual tour: <https://tours.altoura.com/rwlvlily>

Connections Café

- Central hub for attendees to meet, network and recharge
- EDS Events you won't want to miss
- Display booths
- Snack & Beverage options
- EDS Matchmaking Board

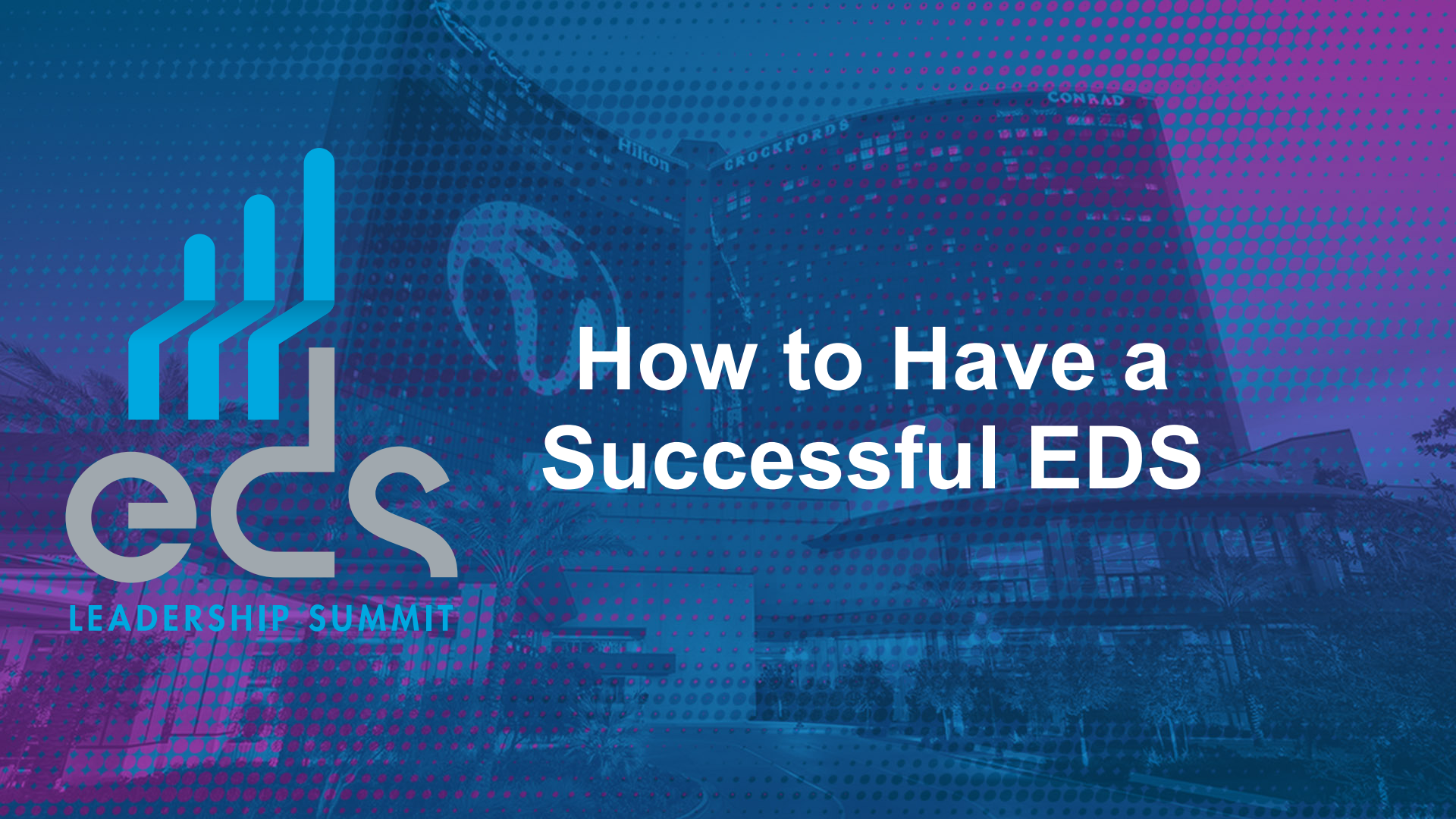


Summit Program / EDS Web App





How to Have a Successful EDS



What is EDS All About?

- Valuable idea exchange
- Networking / building relationships
- Staying up-to-date on industry trends
- Planning, discussing new opportunities, resetting goals
- Building business
- Having fun! (But not too much fun)



EDS Tips, Tricks and Best Practices

- Create a calendar
- Know who's attending
- Set goals
- Pace yourself
- Schedule your meetings early
- Make dinner plans early
- Get familiar with Resorts World
- Prepare materials in advance
- Keep notes
- Be realistic
- Respect time
- Follow up. Follow up. Follow up!

How to Set Up Meetings

- Schedule your meetings early
- Know who's attending
- EDS Matchmaking Utility
edssummit.com/eds/matchmaking
- Matchmaking Board in
Connections Café



Learn more at: edssummit.com/about-eds/best-practices